

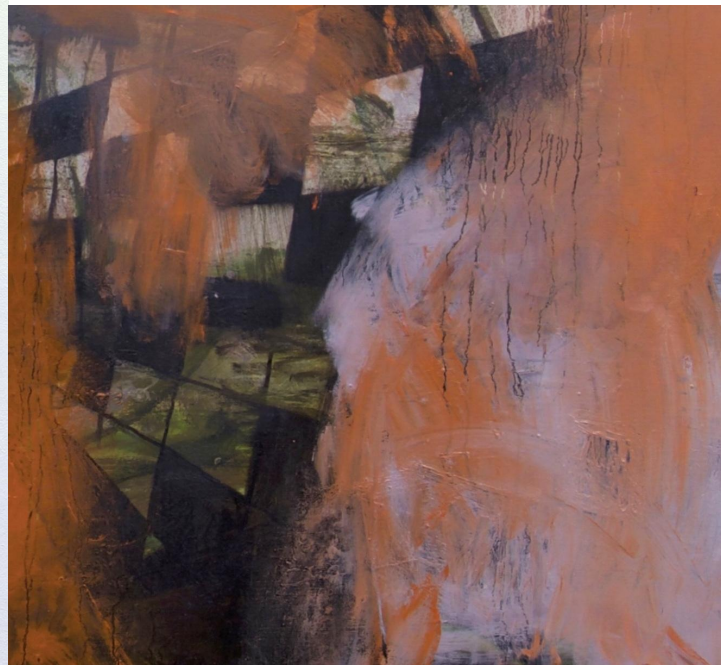
# Portfolio

Laurenz Julian Greuter



Shown at Galerie Larik, Utrecht. Installation with Sam Tromp. L: *Modular Diptych*, 340x160cm, (two panels; L: *Venus and Mars*, 160x200cm, oil on linen; R: *Missile*, 160x140cm, oil on Polyester), 2023. R: Vertical row consisting of nine very small paintings.





*Landscape Intervention*, 180x200cm, oil on canvas, 2023.



*Missile*, 160x140cm, oil on polyester canvas, 2023.







*Landscape Intervention*, 165x190cm, oil on linen, 2025.



*Installation shot of Graduation Show at Luca School of Arts, Brussels, 2025.*





Detail of *Landscape Intervention (Essay on Chimera)*,  
185x200cm, oil on linen, 2025.





*Installation shot of Graduation Show at Luca School of Arts, Brussels, 2025.*





*Landscape Intervention (Essay on Volcano)*, 230x200cm, oil on linen, 2025.



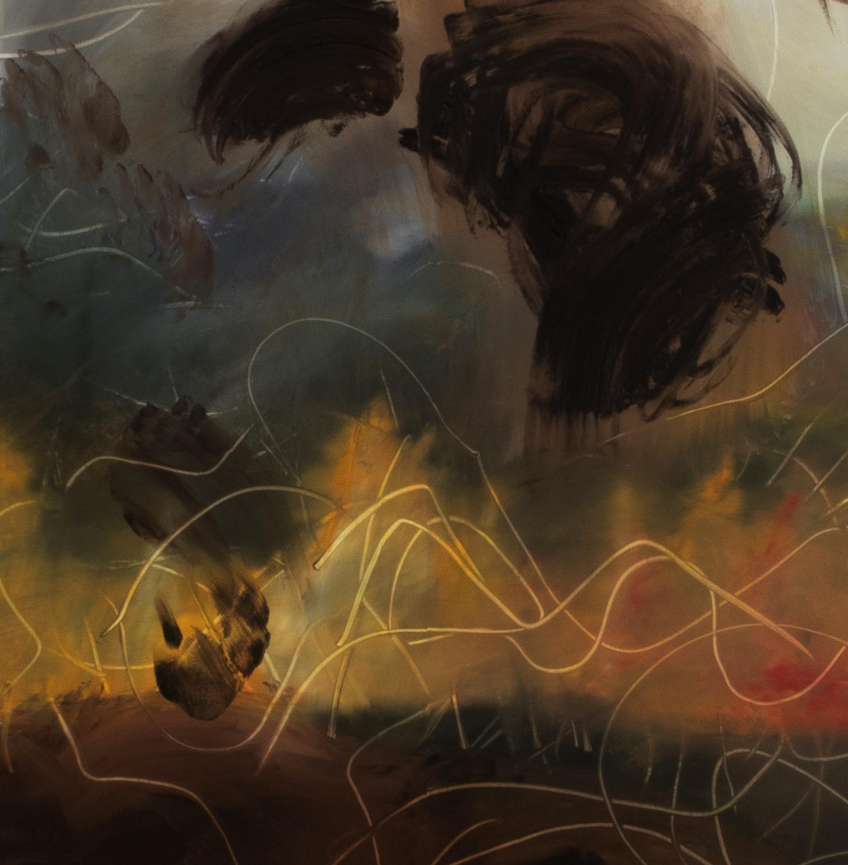


*Landscape Intervention (Jahili Ode II),*  
180x200cm, oil on canvas, 2022



Installation of *Modular Triptych*, 180x520cm(three panels; L: *Landscape Intervention (Jahili Ode II)*, 180x200cm, oil on canvas; M: *Untitled* 180x160cm, oil on canvas; R: *Missile III*, 180x160cm, oil on canvas), 2023.





*Landscape Intervention (Jahili Ode V)*, 170x200cm, oil on canvas, 2022.



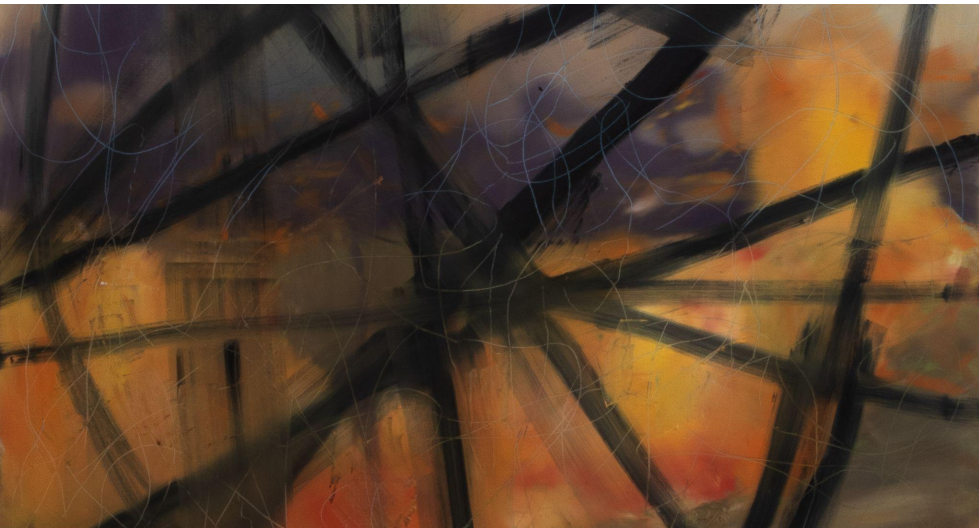


*Landscape Intervention (Jahili Ode)*, 150x200cm, oil on canvas, 2022.

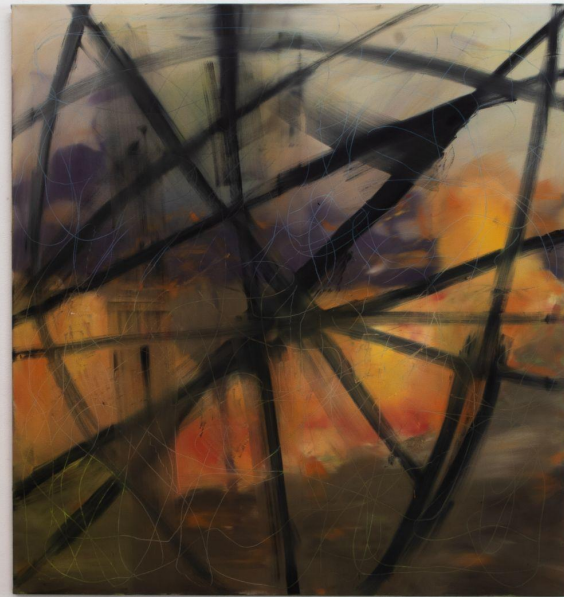




*Landscape Intervention (Jahili Ode XV)*, 184x163cm, oil on linen, 2024.



*Landscape Intervention (Jahili Ode III)*, 170x160cm, oil on linen, 2022.







*Rows consisting of small paintings*







*Landscape Intervention*, 160x185cm, oil on linen, 2024.



*Male Gaze (Essay on Venus)*, 190x185cm, oil on linen, 2025.



Details of *Male Gaze (Essay on Venus)*, 190x185cm, oil on linen, 2025.



*Installation shot of Graduation Show at Luca School of Arts, Brussels, 2025.*



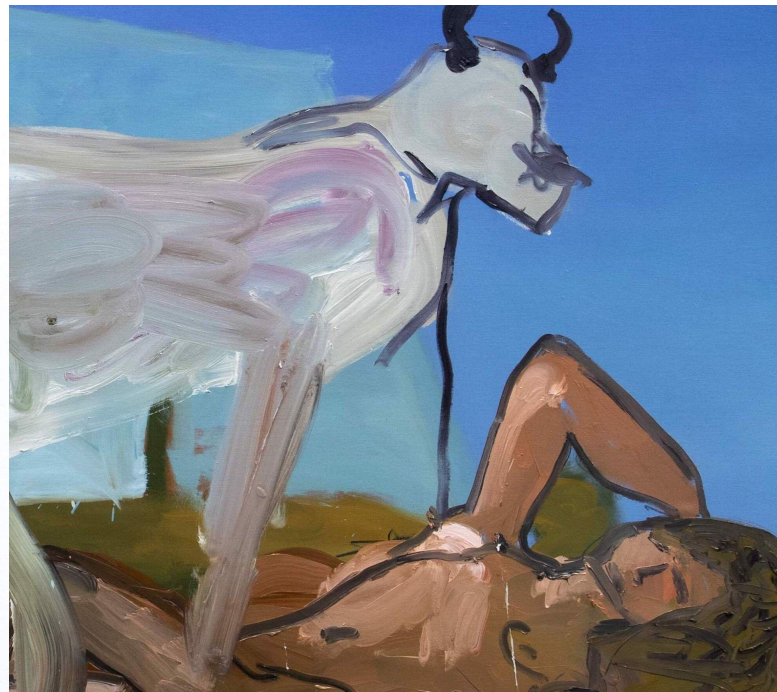


*Landscape Overpainting (Wings)*, 125x240cm, oil on linen, 2024.



*Essay on Chimera III*, 210x170cm, oil on linen, 2024.





*Male Gaze (The Rape of Europe)*, 200x200cm, oil on canvas, 2023.

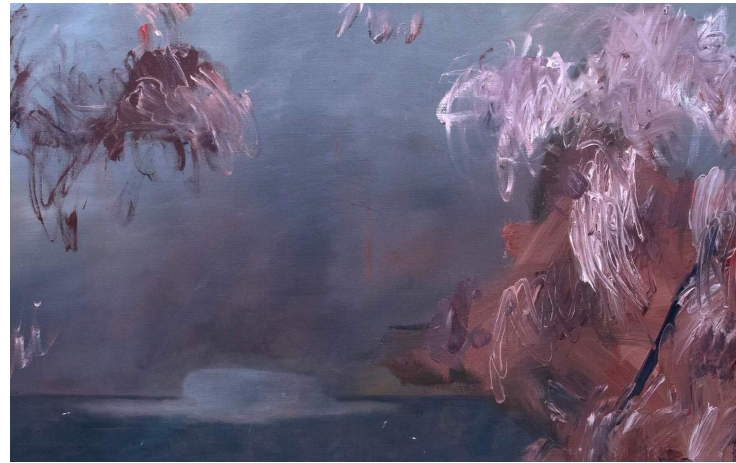




*Landscape Intervention (Essay on Oil)*, 210x200cm, oil on linen, 2023.







*Landscape Intervention (Essay on Oil II)*, 185x200cm, oil on linen, 2023.





*Installation shot of Graduation Show at HKU, Utrecht, 2023.*





*Essay on Oil III*, 200x140cm, oil on canvas, 2023.





*Landscape Intervention (Avalanche)*, 200x260cm, oil on canvas, 2022.





*Landscape Intervention (Essay on Chimera)*, 185x200cm, oil on linen, 2025.



*Modular Diptych*, 340x160cm, (two panels; L: *Untitled (Jet)*, 200x220cm, oil on linen; R: *Bathers*, 200x160cm, oil on Polyester), 2023.





*Essay on Prometheus, 200x220cm, oil on linen, 2024.*



*Landscape Intervention* , 185x270cm, oil on linen, 2024.



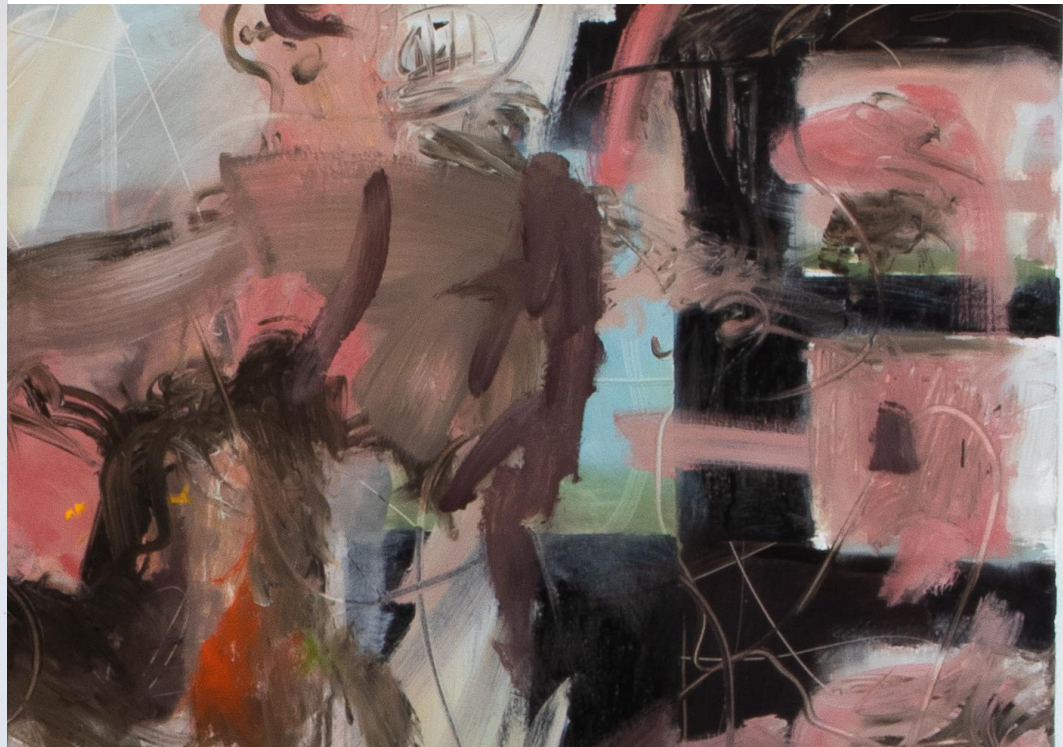


*Aerial view I&II, 25x24cm each, oil on linen, 2023.*



*Male Gaze (Turkish Bath)*, 165x140cm, oil on canvas, 2023.





*Male Gaze (Turkish Bath II)*, 200x220cm, oil on canvas, 2023.



*Installation shot of Graduation Show at HKU, Utrecht, 2023.*





*Appropriated flag still life, 125x140cm, oil on linen, 2024.*



*Appropriated flag still life, 100x112.5cm, oil on linen, 2024.*





*Appropriated flag still life, 105x125cm, oil on linen, 2024.*



*Still life with Sauerkraut und Dönerspieß, 145x140cm, oil on linen, 2024.*





*Untitled, 90x110cm, oil on linen, 2024.*



*Balustrade V (Pegasus)*, 200x140cm, oil on canvas, 2022.





*Balustrade VI (Bacchus & Satyr)*, 170x140cm, oil on canvas, 2022